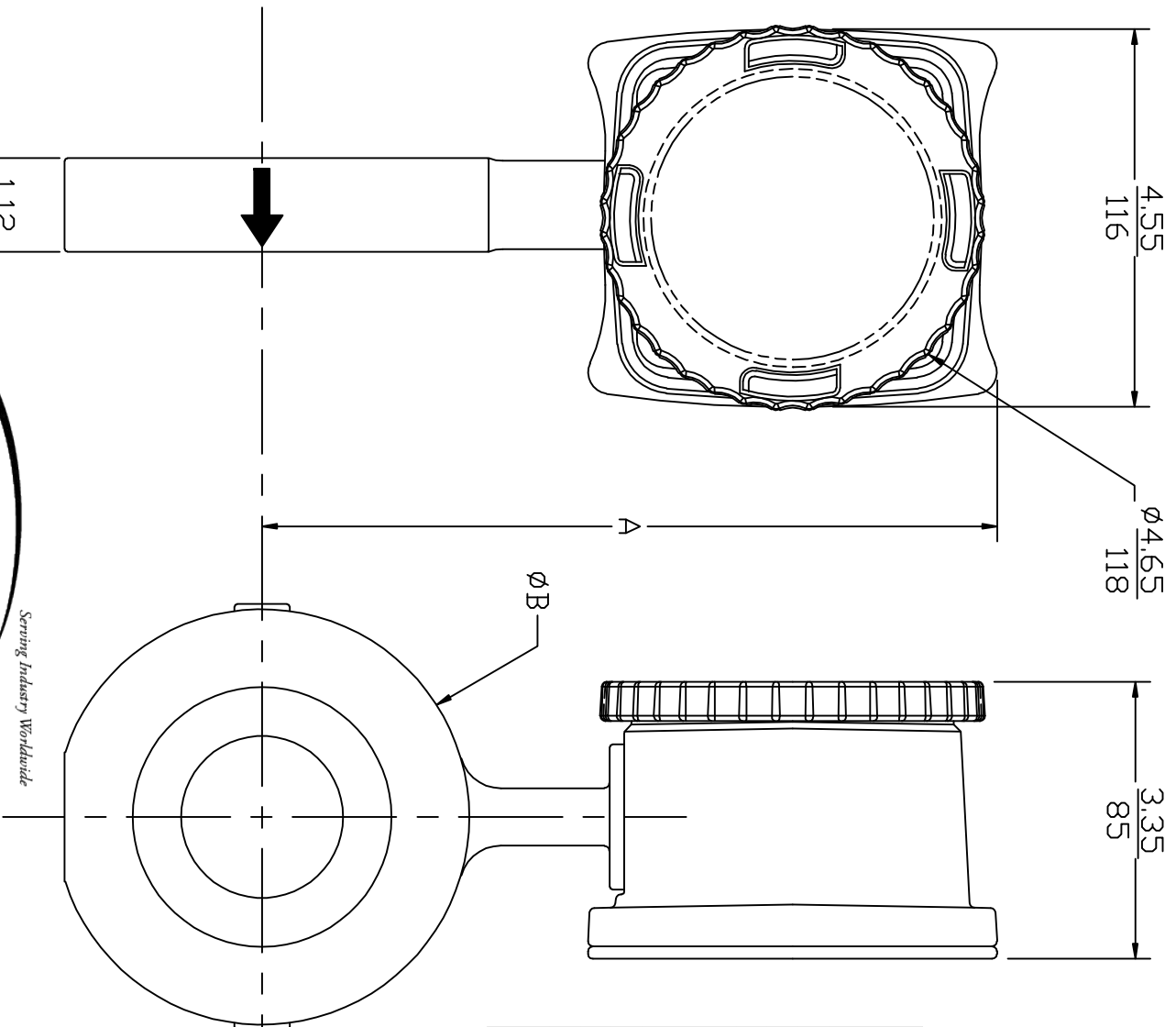


| LT# | DATE | BY | CHECK | REVISIONS |
|-----|---------|----|-------|--------------------|
| A | 8/11/00 | | | INITIAL DESIGN |
| B | 8/11/00 | | | ADD SST DIMENSIONS |

SERIES 8000

DIMENSION

| PIPE SIZE | BRONZE & MONEL | | | | SST | | |
|-----------|----------------|-------|-----|-------|-----|-------|-----|
| | A | | B | | B | | |
| in | mm | in | mm | in | mm | mm | |
| 0.5 | 15 | 6.62 | 168 | 1.69 | 43 | 1.62 | 41 |
| 0.75 | 20 | 7.06 | 179 | 2.00 | 51 | 2.00 | 51 |
| 1.0 | 25 | 7.25 | 184 | 2.38 | 60 | 2.38 | 60 |
| 1.5 | 40 | 7.81 | 198 | 3.12 | 79 | 3.00 | 76 |
| 2.0 | 50 | 8.00 | 203 | 3.75 | 95 | 3.75 | 95 |
| 2.5 | 65 | 8.54 | 217 | 4.25 | 108 | 4.25 | 108 |
| 3.0 | 80 | 8.87 | 225 | 5.00 | 127 | 5.00 | 127 |
| 4.0 | 100 | 9.95 | 252 | 6.13 | 156 | 6.00 | 152 |
| 5.0 | 125 | 10.36 | 263 | 7.38 | 187 | 7.00 | 178 |
| 6.0 | 150 | 11.05 | 280 | 8.38 | 213 | 8.00 | 203 |
| 8.0 | 200 | 12.30 | 311 | 10.38 | 264 | 10.00 | 254 |

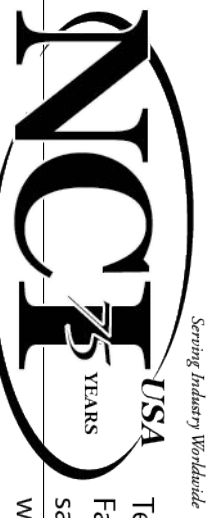


NOTES:
1. DIMENSION FORMAT IS $\frac{\text{in}}{\text{mm}}$

| ITEM | DWG. NO. | DESCRIPTION OF MATERIALS | QTY. |
|---|----------|--------------------------|------|
| UNLESS OTHERWISE SPECIFIED: DIMENSIONS ARE IN INCHES TOLERANCES | | | |
| FRACTIONS: $\frac{\#}{\#}$ | | | |
| X .XX | | | |
| .XXX | | | |
| ANGLES: $\#$ | | | |
| SURFACE FINISH: $\#$ | | | |
| DRAWN BY | DATE | SCALE | SIZE |
| CHECKED BY | 8/11/00 | 1:1 | C |
| DWC | | DWG NO. | 6390 |

FCM Industries, Inc.
110 MASON CIRCLE
CONCORD, CA. 94520

SERIES 8000 FLOWMETER
HOUSING-BODY
ASSEMBLY



Tel: 201-419-6111
Fax: 201-419-6109
sales@nciflow.com
www.nciflow.com