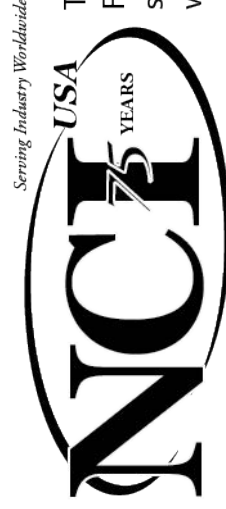
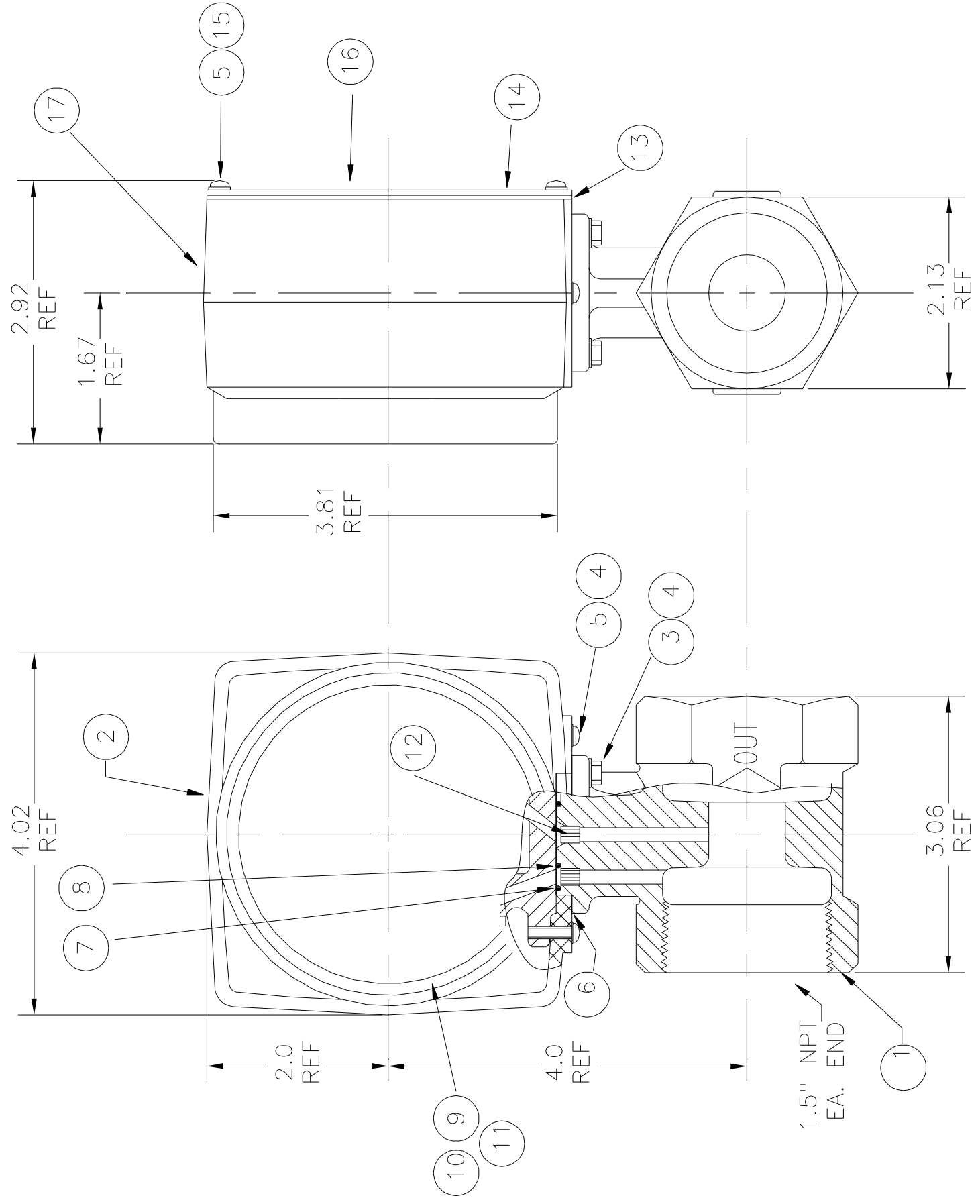


LTR	DATE	BY	CHECK	REVISIONS
A	10/8/03			FOR HISTORY SEE AA2813



Tel: 201-419-6111
 Fax: 201-419-6109
 sales@nciflow.com
 www.nciflow.com



17	2041	NAMEPLATE LABEL	1
16	6287	CALIBRATION STICKER	1
15	4301	#8 SST LOCK WASHER	4
14	1542	BACK COVER PLATE	1
13	1631	BACK COVER PLATE GASKET	1
12	6307	PULSATION SNUBBER	2
11	4481	SST RETAINER RING	1
10	6168	PLASTIC DIAL CRYSTAL	1
9	2951	DIAL GASKET	1
8	4511	-016 O-RING	1
7	4531	-024 O-RING	1
6	3651	FLANGE GASKET	1
5	6599	8-32x3/8 PAN HD SST	6
4	4251	NYLITE WASHER, #8 NYLON	6
3	4401	8-32x5/8" SST HEX HD SCREW	4
2	5293	ALUMINUM HOUSING	1
1	1883	1 1/2" MONEL BODY	1
ITEM	DWG. NO.	DESCRIPTION OF MATERIALS	QTY.

UNLESS OTHERWISE SPECIFIED:
 DIMENSIONS ARE IN INCHES
 TOLERANCES

FRACTIONS: E .03
 X .03
 XX .03
 .XXX E
 ANGLES: E
 SURFACE FINISH: S

DATE: 10/08/03

RCM Industries, Inc. 110 MASON CIRCLE
 CONCORD, CA. 94520

SERIES 7000 FLOWMETER
 1.5" MONEL OPT D,F

SCALE 1:1 SIZE C DWG NO. 6849 PAGE OF REV A

